

This manual will show you how to setup Logitech Harmony Universal Remote to control X10 home automation system .

Hardware Requirement :

- 1) Logitech Harmony Universal Remote e.g. Logitech Harmony 880
- 2) Marmitek IR \ RF Transceiver + Mini Controller , model number : IRRF7243U
- 3) Several X10 device e.g. X10-2026UK X10 Plug-in Module , X10-2222 Single Button Dimmer Wall Switch ...etc

In following example :

We have several X10 device and already assign specific X10 address.

- | | | |
|-------------|---|-----------------------------------|
| Bedroom | - | Light is B1 |
| Living Room | - | Light 1 is B3 |
| | - | Light 2 is B4 |
| | - | Low Voltage Halogen Lamp 1 is B9 |
| | - | Low Voltage Halogen Lamp 2 is B10 |
| Toilet | - | Light is B5 |
| Kitchen | - | Light is B6 |

Setting for Marmitek IRRF7243U :

Please set the correct House code on IRRF7243U

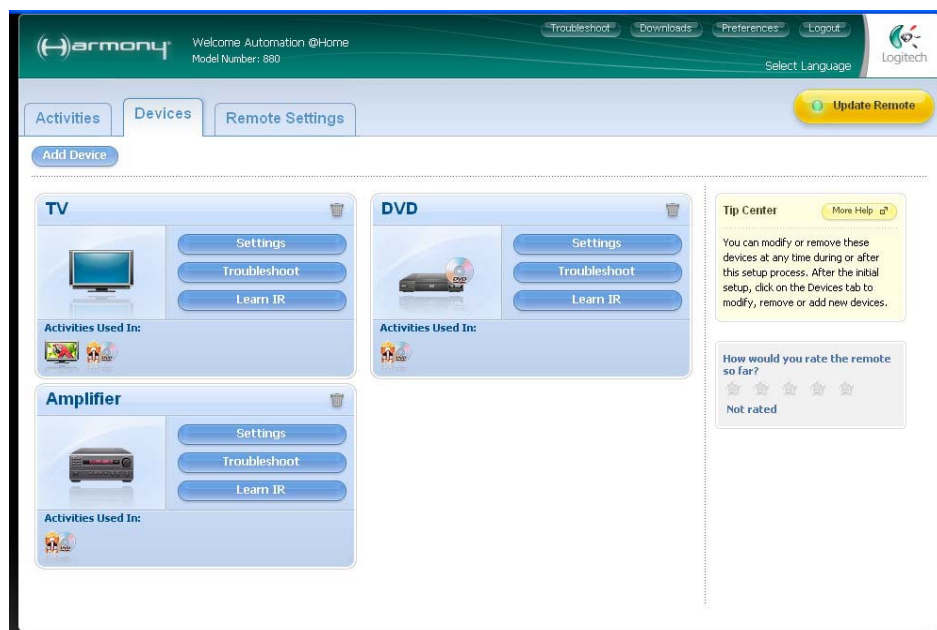
e.g. for above sample , please set to House Code B

Run the Logitech Harmony Remote Software and follow below step to setup the remote.

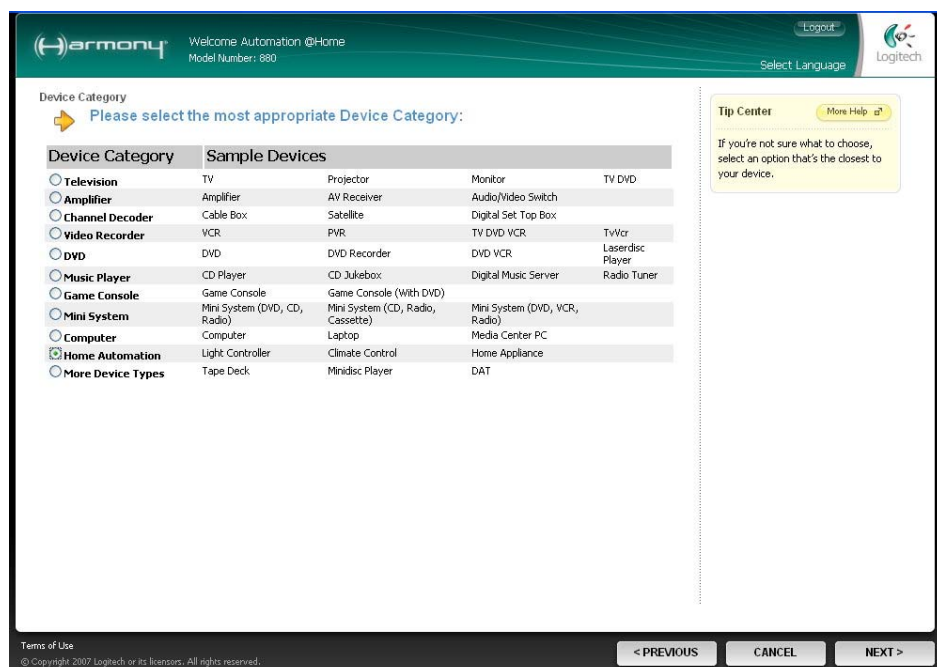


- 1) Click “Devices” tab.

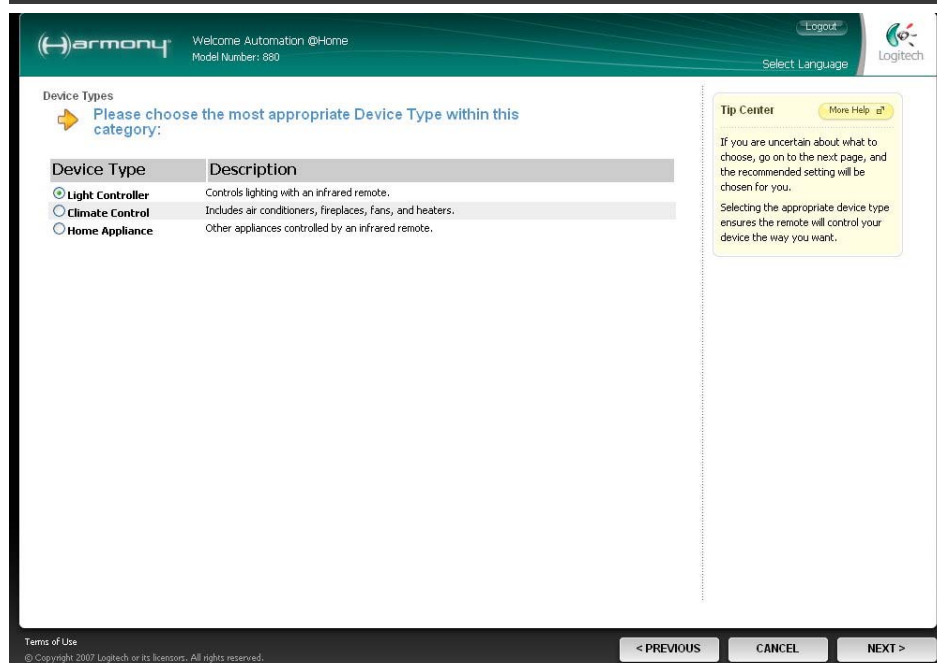
2) Click “Add Device” button.



3) Select “Home Automation” then click “NEXT >”



4) Select “Light Controller” then click “NEXT >”



Welcome Automation @Home
Model Number: 880

Select Language

Device Manufacturer
Select the manufacturer of your device.

Device Type: Light Controller
Manufacturer: Marmitek

Tip Center More Help

If you can't find the manufacturer of your device in our list, select "Not Listed" and then click Next. You will then be able to enter the manufacturer name and model number.

The list contains only manufacturer names, not device names. For example, if you have an Xbox, the manufacturer would be Microsoft, not Xbox.

Terms of Use
© Copyright 2007 Logitech or its licensors. All rights reserved.

< PREVIOUS CANCEL NEXT >

5) Select "Marmitek" then click "NEXT >"

Welcome Automation @Home
Model Number: 880

Select Language

Model Numbers
Enter the model number of your device:

The model number is the most important information for ensuring that the remote will control your devices correctly.

Device Type	Manufacturer	Model Number	Example Model Number
Light Controller	Marmitek	IR7243	IR7243

Tip Center More Help

Model numbers can be found on the front or the back of the device, or in your device User Manual. It's important to use the correct manufacturer and model numbers for your devices so the remote can control your devices correctly.

ACME
MODEL NO. SA-2330-SL
120V AC 60Hz 13W
SN: MC1100001254

You can download and print the provided worksheet to write down the information about your devices. This way you will have the necessary information handy as you control the device.

Terms of Use
© Copyright 2007 Logitech or its licensors. All rights reserved.

< PREVIOUS CANCEL NEXT >

6) Input "IR7243" then click "NEXT >"

Welcome Automation @Home
Model Number: 880

Select Language

Devices Confirmation
Please review the manufacturer and model number for the devices you have added.

If everything is correct, select the checkbox and then click Next. Click Previous to make changes to the information.

Device Type	Manufacturer	Model Number
Light Controller	Marmitek	IR7243

☒ All of this information is correct, no changes are required.

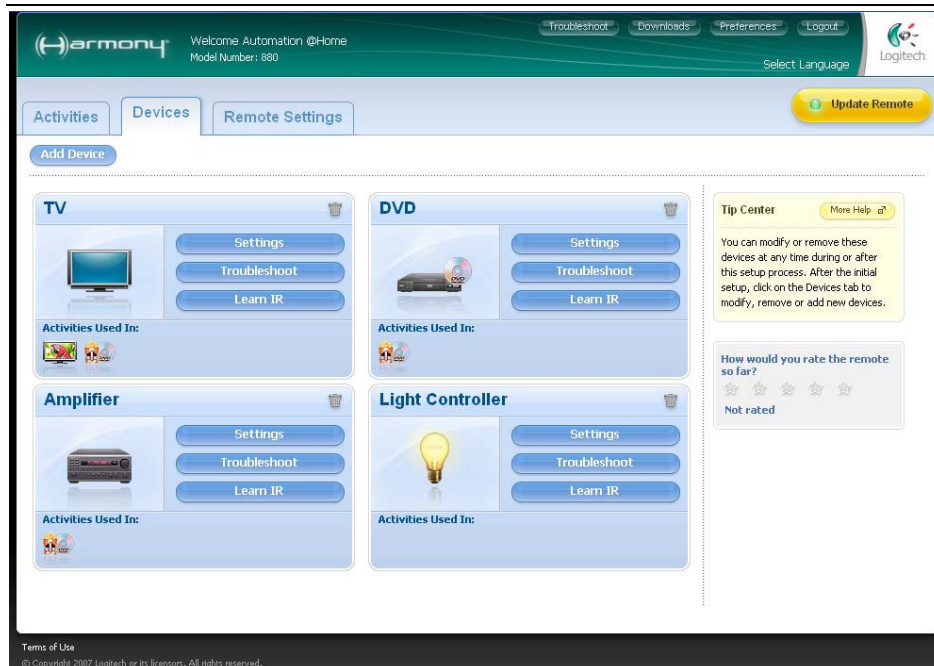
Tip Center More Help

Ensure the information listed is correct. In order for the remote to control your devices correctly, it's important to enter the correct manufacturer and model numbers for your devices.

Terms of Use
© Copyright 2007 Logitech or its licensors. All rights reserved.

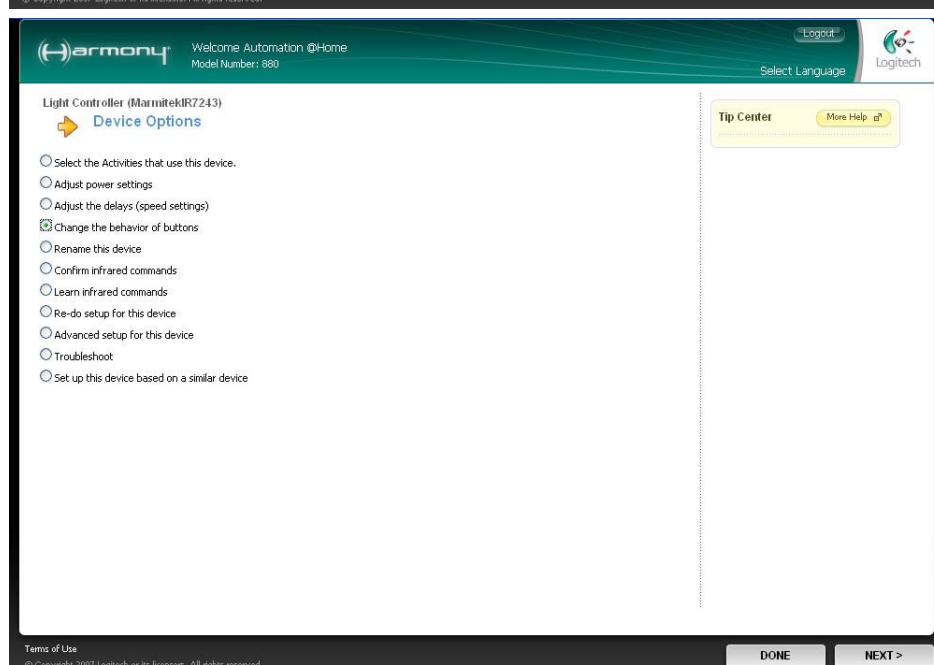
< PREVIOUS NEXT >

7) Reconfirm the data is correct then click "NEXT >"

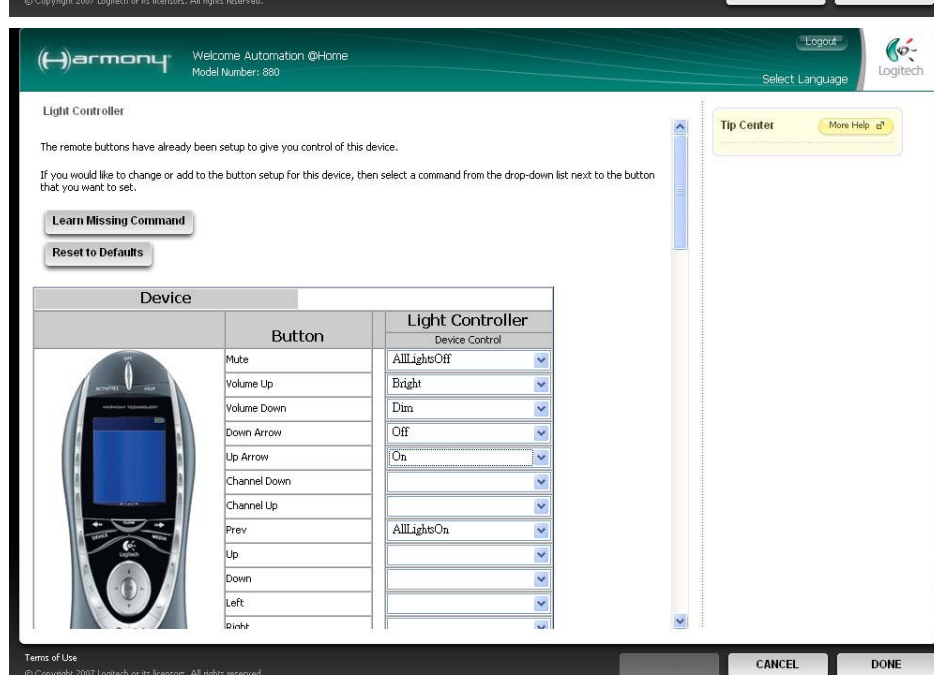


8) After you add the Light Controller it will appear on the “**Devices**” page.

Then click “**Settings**” in “**Light Controller Section**”



9) Select “**Change the behavior of buttons**” then click “**NEXT >**”



10) Assign the X10 command to specific button , e.g.

Mute Button – All Lights Off

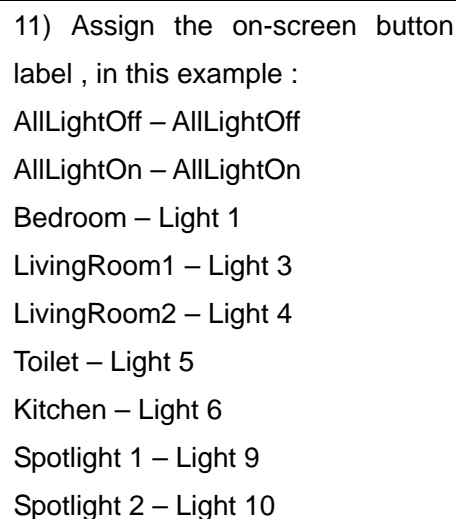
Volume Up Button – Bright

Volume Down Button – Dim

Up Arrow Button – On

Down Arrow Button – Off

Prev. Button – All Lights On



After that , click “ **DONE** ”

